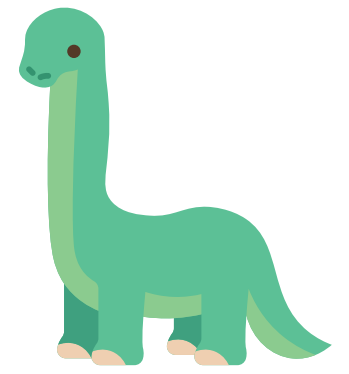
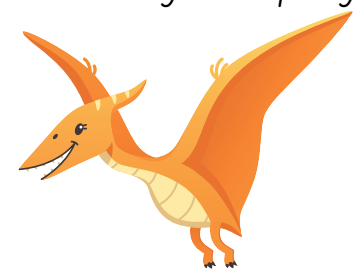


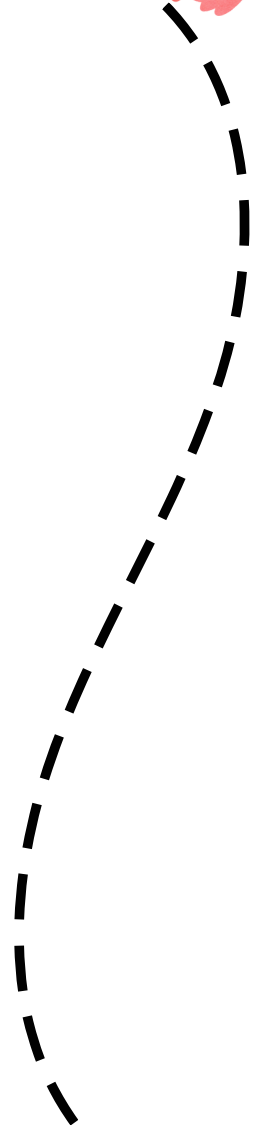
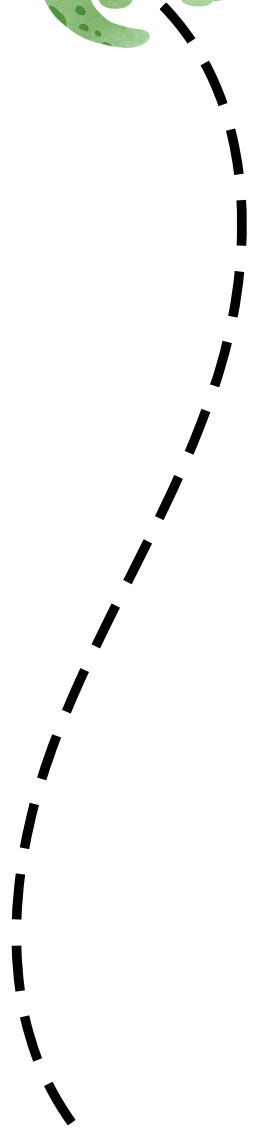
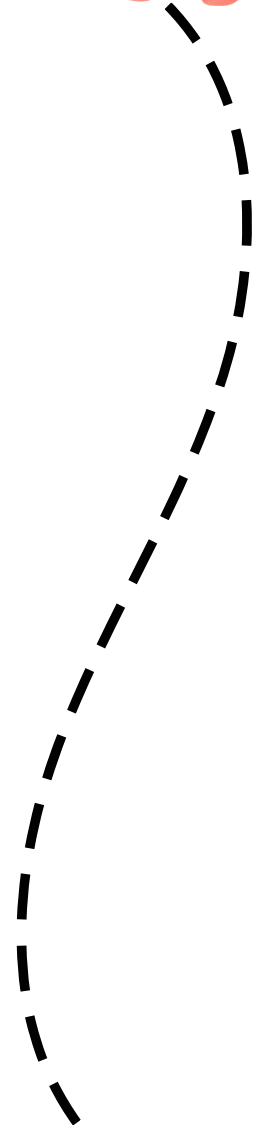
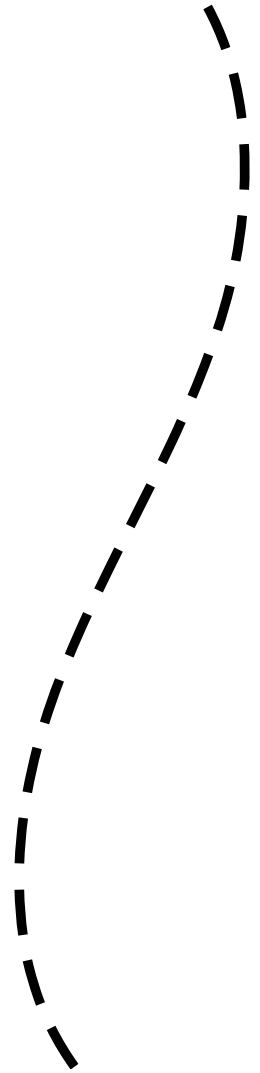
*Cut along the dotted line.*

*We recommend sticking the top edge (above) on a table to stabilise the paper when cutting.*



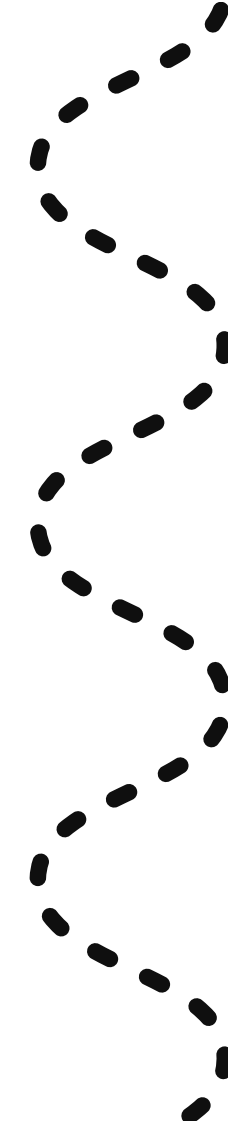
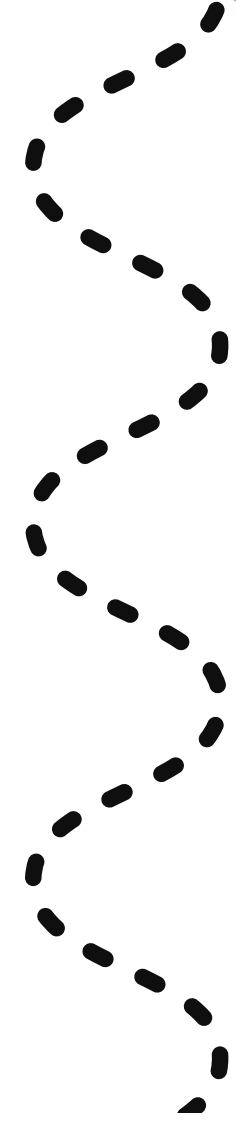
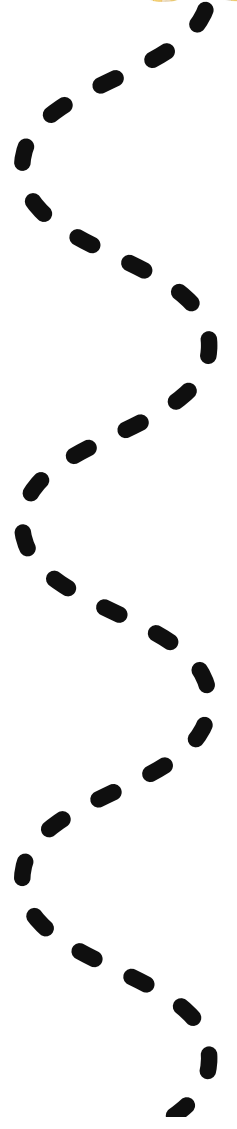
Cut along the dotted line.

*We recommend sticking the top edge (above) on a table to stabilise the paper when cutting.*



# Cut along the dotted line.

We recommend sticking the top edge (above) on a table to stabilise the paper when cutting.



# Cut along the dotted line.

We recommend sticking the top edge (above) on a table to stabilise the paper when cutting.

